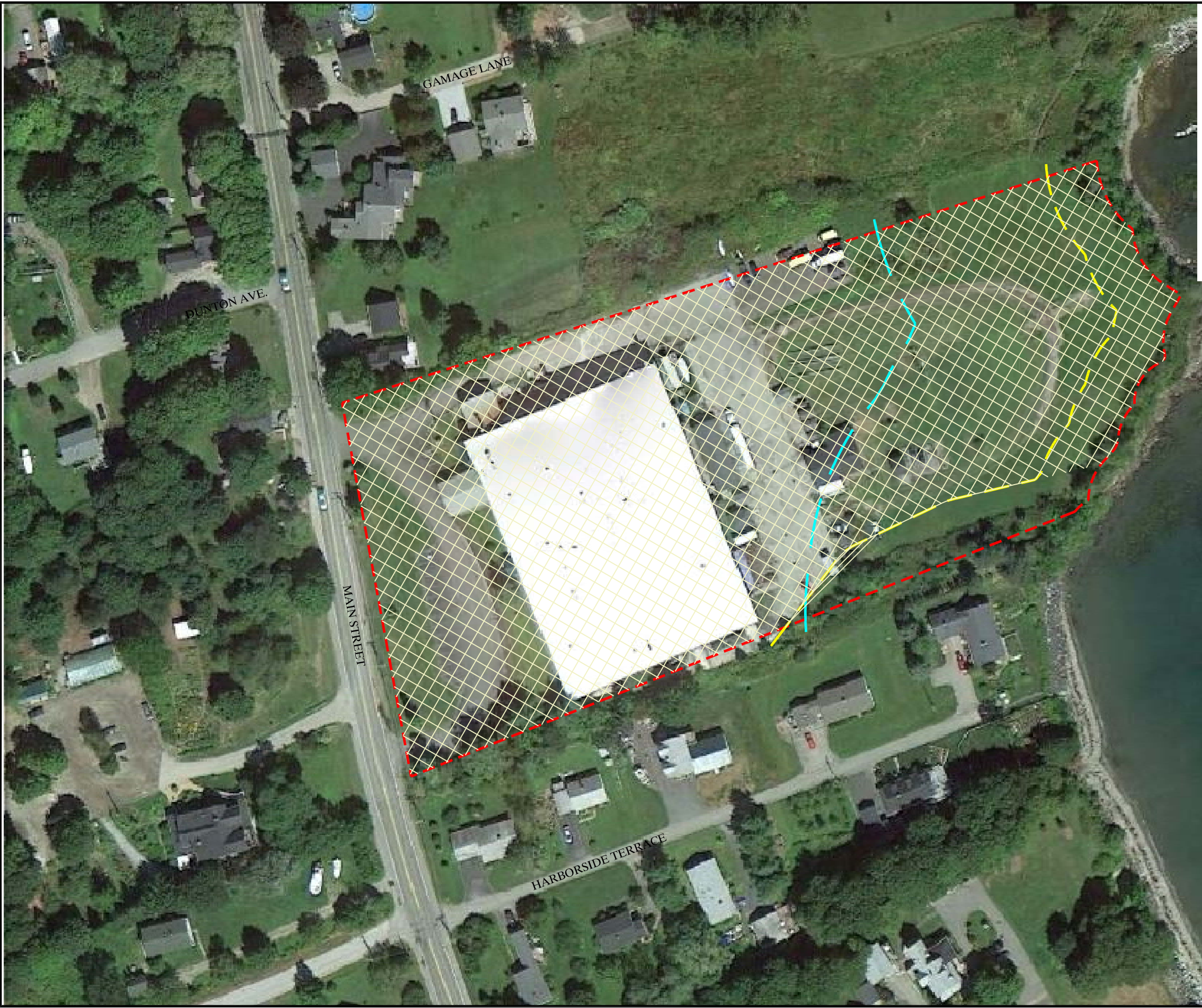


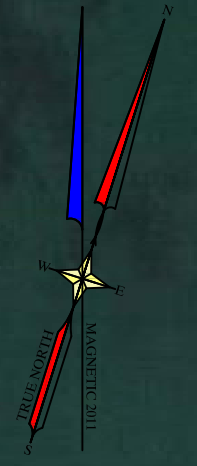
H:\Land Projects\3\13372\Drawings\Aerial_C302012.dwg



LEGEND

- APPROXIMATE PROPERTY LINE
- APPROXIMATE MUNICIPAL SETBACK LINE
- APPROXIMATE NRPA JURISDICTIONAL LINE
- APPROXIMATE 250' SHORELAND ZONE BOUNDARY
- BUILDABLE AREA

ZONING REQUIREMENTS (WF-1 & GENERAL DEV. SLZ)	
MINIMUM LOT SIZE	40,000 SF
MINIMUM STREET FRONTAGE	100 FT
FRONT SETBACK	15 FT (LANDSCAPE BUFFER)
SIDE SETBACK	12 FT
WATER FRONTAGE SETBACK	25 FT (80% OF FRONTAGE)
FOOR-AREA-RATIO	40% (BASE)
MAXIMUM BUILDING HEIGHT	40'



GRAPHIC SCALE

1 inch = 100 ft.

AERIAL				
MID-COAST SCHOOL OF TECHNOLOGY <small>ENGINEERING & SURVEYING</small>	CLIENT/PROJECT 1 MAIN STREET	TOWN: ROCKLAND COUNTY: KNOX STATE: MAINE	SHEET TITLE: AERIAL	DRAWN BY: JAM CHECKED BY:
LOCATION: 1 MAIN STREET	SCALE: 1"=100'	DATE: FEBRUARY 4, 2014	NO.	REVISIONS
TOWN: ROCKLAND COUNTY: KNOX STATE: MAINE	DATE: FEBRUARY 4, 2014	CHECKED BY:	NO.	REVISIONS
PROJ. NO. 2013-372		AE-1		

Gartley & Dorsky
ENGINEERING & SURVEYING

508 Union Street P.O. Box 1031, Gardis, ME 04843-1031
 Ph: (207) 256-6365 Fax: (207) 262-6365 Toll Free: 1-888-282-4465
 105 Main Street Suite 20 P.O. Box 1007, Damariscott, Maine 04843
 Ph: (207) 796-6265